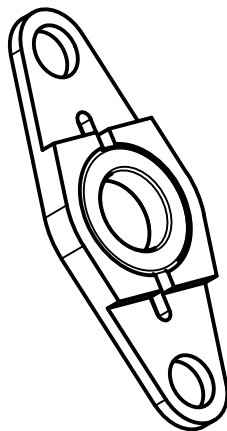
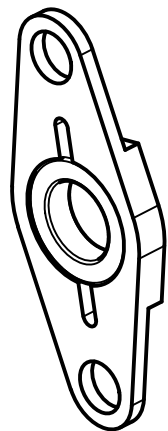
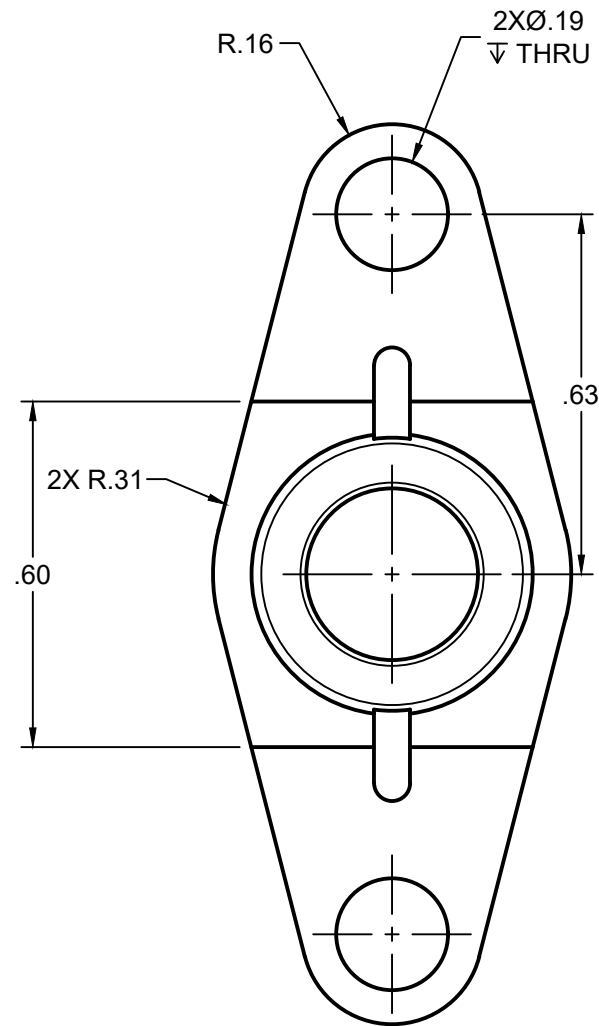
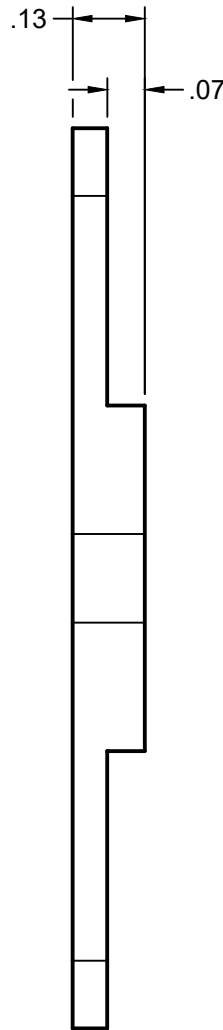
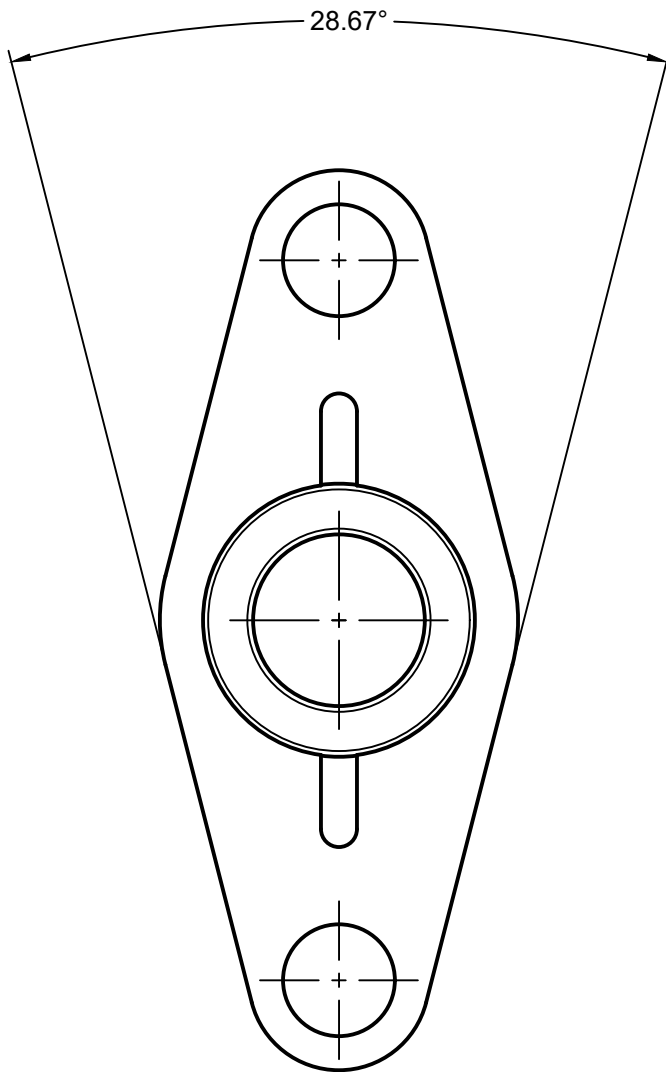


INTERFACE DETAILS AND NOTES:

1. USE A STAINLESS STEEL OR NONFERROUS SCREWS WHEN MOUNTING

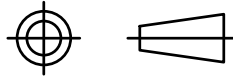
REVISION HISTORY		
REV	DESCRIPTION	DATE
0	INITIAL RELEASE	01/05/2018



ISOMETRIC VIEWS
SCALE:NONE

CONFIDENTIAL - ALL RIGHTS RESERVED
DISCLOSURE OR DUPLICATION PROHIBITED

UNLESS OTHERWISE SPECIFIED:
DIMENSIONS ARE IN DECIMAL INCH



ALL DIMENSIONS ARE REFERENCE

DRAWN:
T.WOLFF

CHECKED:
J.WARZALA

PART #:
MAGH-PE40-FLANG

EPICOR #:
19200667

DATE:
10/02/2025

APPROVED:
10/02/2025

REV. 0 SIZE: B



WWW.JORALLLC.COM

DESCRIPTION:
PE40 MAG ACCESSORY

SCALE:
3:1

SHEET:
1/1